

GENUINE

KIRAVANS

DESIGN

ISO
9001
QUALITY
ASSURANCE

TESTING

For Peace of Mind

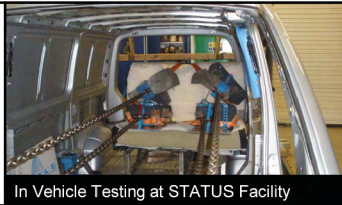
Your Certified RIB Seat Installation System has been designed by Kiravans, tested by STATUS (in vehicle) and manufactured in the UK to exacting standards in an ISO9001 quality certified production facility .



Seat Belt Anchorage Test Report

Report Reference No: 2007E

For an In-Vehicle Test
To EC Directive 76/115/EEC
As Amended By 2005/41/EC,
& To ECE Regulation 14.07



In Vehicle Testing at STATUS Facility

Vehicle Type: Volkswagen T5 based Motor Caravan

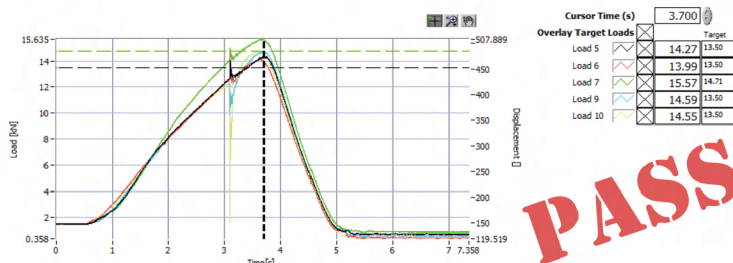
Test date: 26/11/13

Objective:

To test the seat belt anchorages in the sample supplied of the above vehicle for compliance with the positional and strength requirements of EC Directive 76/115/EEC as amended by 2005/41/EC & ECE Regulation 14.07 for vehicle Category M1

Conclusions:

The vehicle seat belt anchorages tested in the sample supplied complied with the positional requirements stipulated in section 4.4 of Annex 1 of Directive 76/115/EEC (as amended by 2005/41/EC) & section 5.4 of ECE Regulation 14.07 as demonstrated by the data in Appendix 1 and the strength requirements stipulated in section 5 of Annex 1 of Directive 76/115/EEC (as amended by 2005/41/EC) & section 6 of ECE Regulation 14.07 for vehicle Category M1 as shown in the graphs in Appendix 2.



PASS

CERTIFIED RIB SEAT INSTALLATION SYSTEM

ABOUT

Genuine Kiravans Design

The Kiravans RIB Seat Installation System is designed and tested to safely secure a RIB Altair seat into a VW T5 Transporter van.



The system consists of a unique, heavy-gauge, steel mounting bracket and the included nuts, bolts and washers. The bracket fits under the van floor and connects to the vehicle's main chassis members.

Every genuine Kiravans mounting bracket will have a unique identification number on it. To verify the authenticity of your RIB seat fitting please check that the mounting bracket ID, RIB Seat number and vehicle Reg. are all entered correctly below.

**APPROVED, SAFE
CAMPERVAN
SEATING.**

INSTALLATION

Please complete this section on installation

Vehicle Make and Model:

Vehicle Registration:

Installation System ID Number:

(Located on silver label on underside of mounting bracket)

RIB Seat ID Number:

(Located on one of the seat belt buckle mounting plates)

Installed By:

Company Details:

(If applicable)

Installation Date:

For more information & other innovative camper van parts, visit:

www.kiravans.co.uk